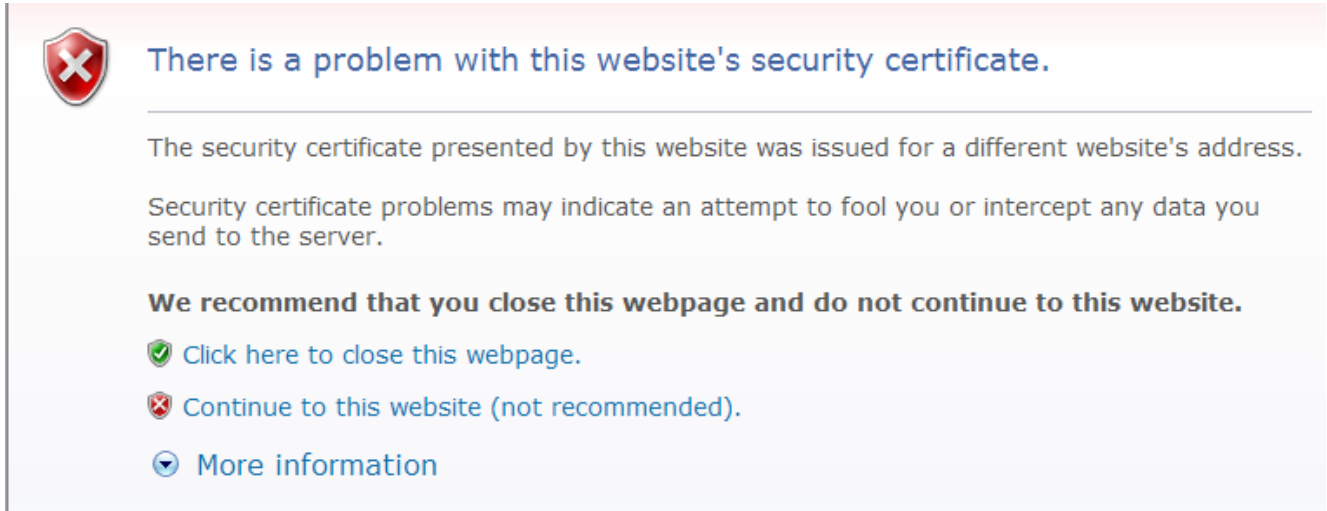


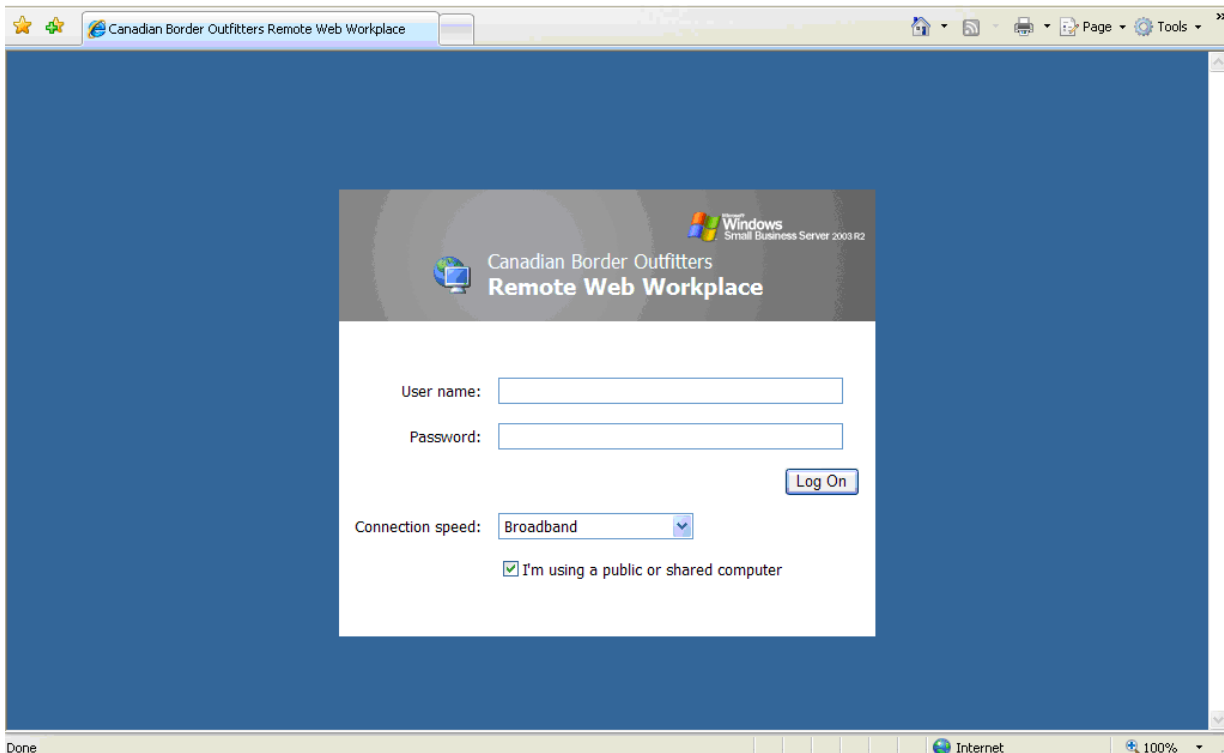
Connect to a Computer at CBO

To log in, start Internet Explorer, and type <https://www.xxxxxxxx.xxx/Remote>. You'll see a warning message "There is a problem with this website's security certificate. The security certificate presented by this website was not issued by a trusted certificate authority." This occurs because the security certificate for the server is self-signed. For your purposes, this is not a problem.



The screenshot shows a security warning dialog box with a red shield icon containing a white 'X'. The text reads: "There is a problem with this website's security certificate." Below this, it states: "The security certificate presented by this website was issued for a different website's address. Security certificate problems may indicate an attempt to fool you or intercept any data you send to the server." A bold recommendation follows: "We recommend that you close this webpage and do not continue to this website." Three options are provided: a green checkmark icon for "Click here to close this webpage.", a red 'X' icon for "Continue to this website (not recommended).", and a blue downward arrow icon for "More information".

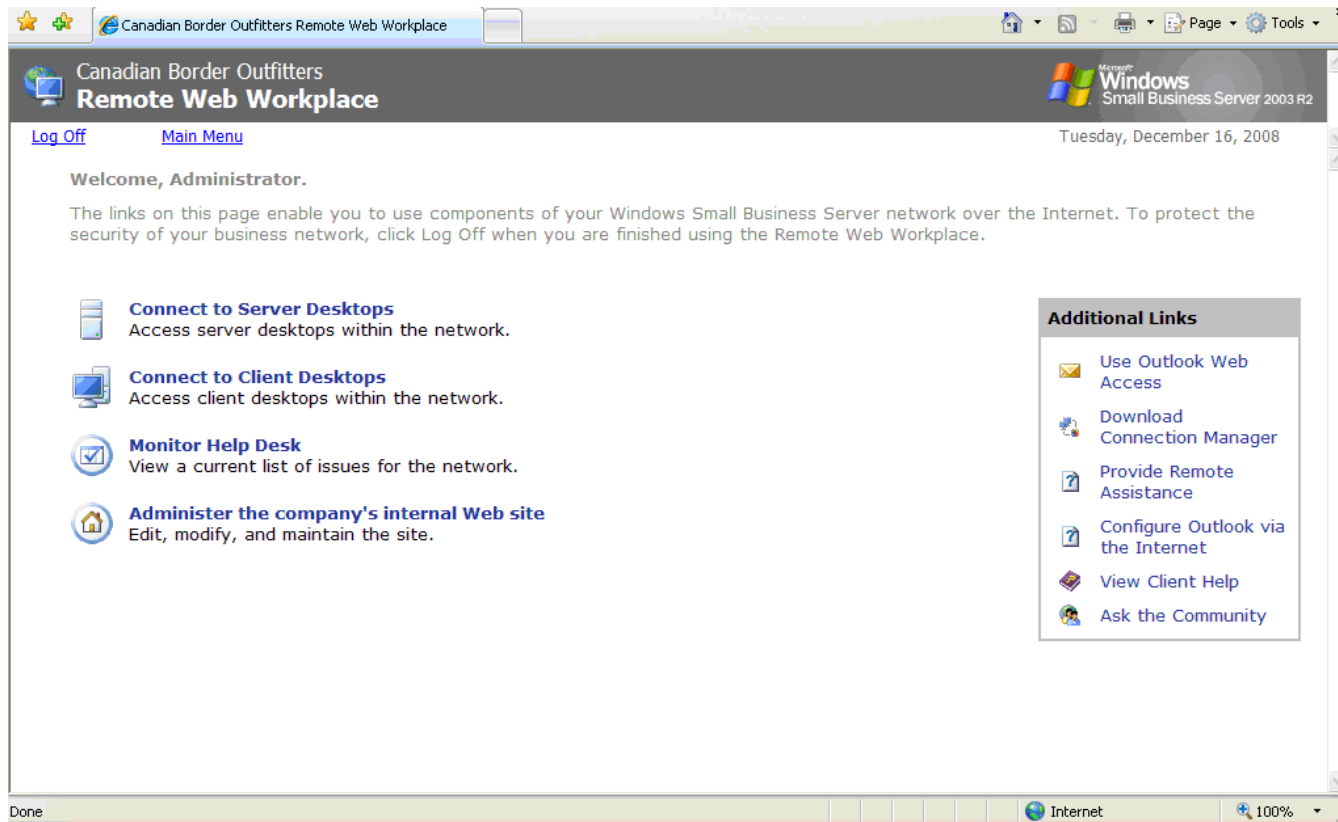
Click "Continue to this website (not recommended)." You'll see the Remote Web Workplace screen. If this is the first time you have logged in from the computer, add this site to your Favorites. You can then skip having to type in the URL, and just click on the favorite titled "Canadian Border Outfitters Remote Web Workplace".



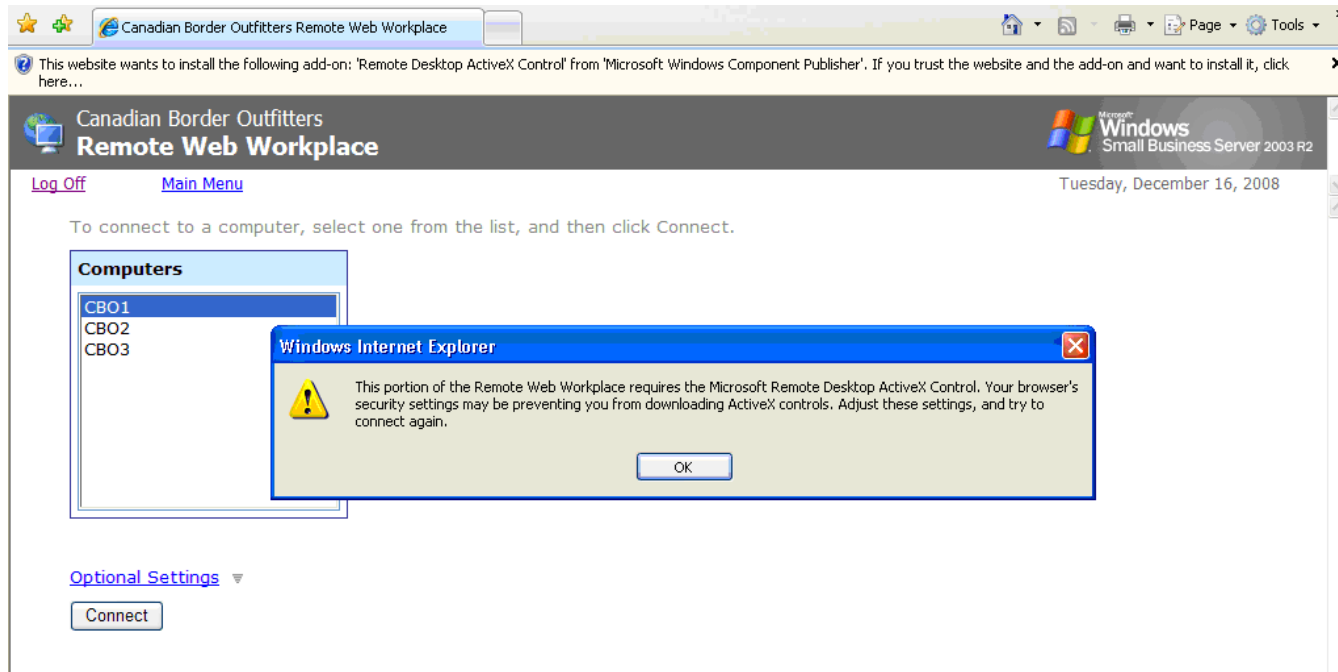
The screenshot shows the login page for "Canadian Border Outfitters Remote Web Workplace" in an Internet Explorer browser window. The page has a blue background. At the top, there is a header with the Windows logo and "Windows Small Business Server 2003 R2". Below the header, the text "Canadian Border Outfitters Remote Web Workplace" is displayed. The login form includes a "User name:" field, a "Password:" field, and a "Log On" button. Below the password field, there is a "Connection speed:" dropdown menu set to "Broadband" and a checked checkbox labeled "I'm using a public or shared computer". The browser's address bar shows "Canadian Border Outfitters Remote Web Workplace" and the status bar at the bottom indicates "Done" and "Internet".

Enter the user name and password for the computer you wish to log in to. Normally this will be the CBO1 computer (see the list of options with user names and passwords at the end of this

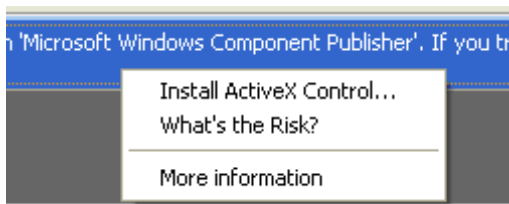
document), then click **Log On**. NOTE: If you are at home, make sure that the **I'm using a public or shared computer** is NOT checked. The following screen will appear:



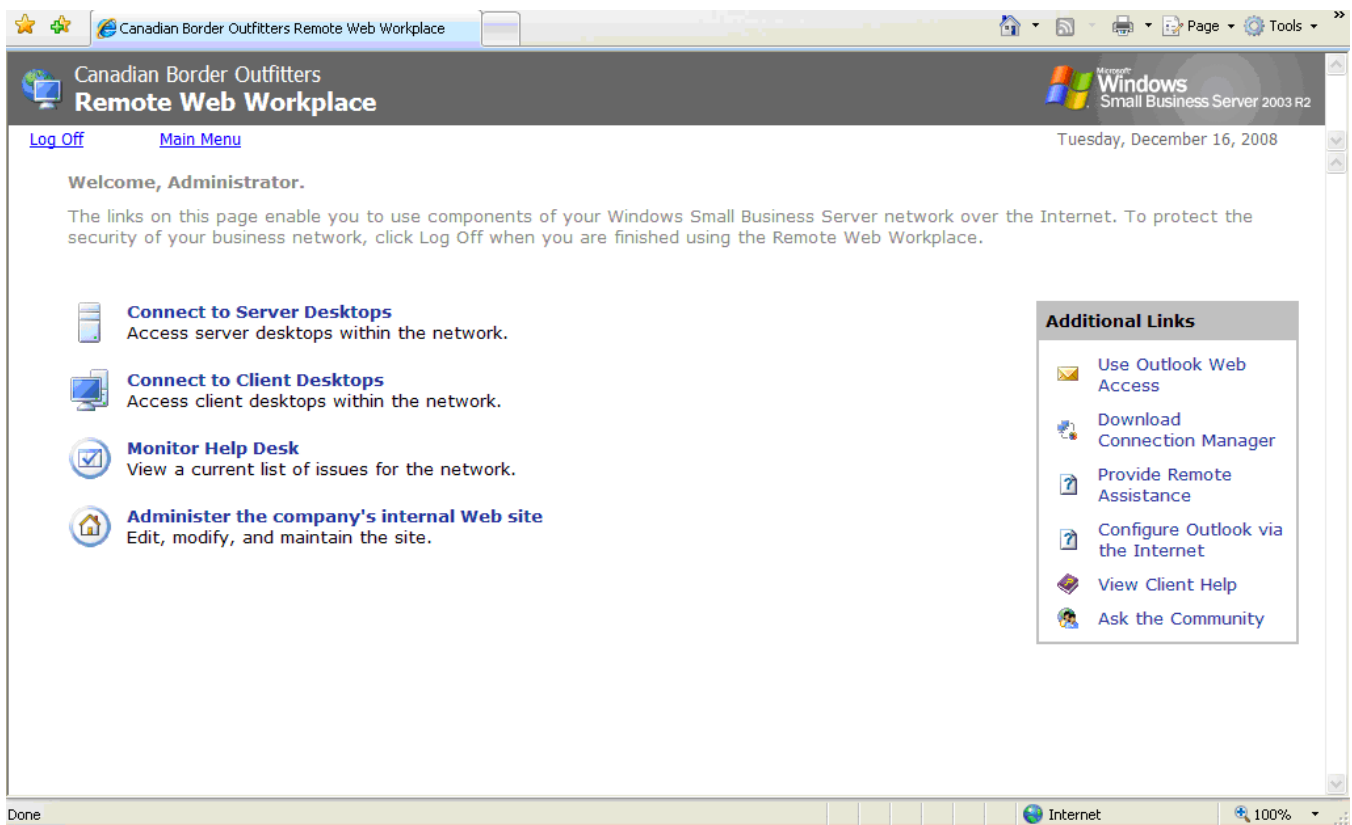
You'll want to connect to a client desktop. You can connect to the server desktop, but it is recommended that you do not do so, as you could make unintended changes that could create connection problems. Click "Connect to Client Desktops." The first time you do this, the following screen will appear (this may take up to 30 seconds):



You will be told that an ActiveX control must be installed. Click **OK**. Now move to the top of Internet Explorer where the warning message appears about installing the ActiveX and click on it. A menu will appear as seen here:



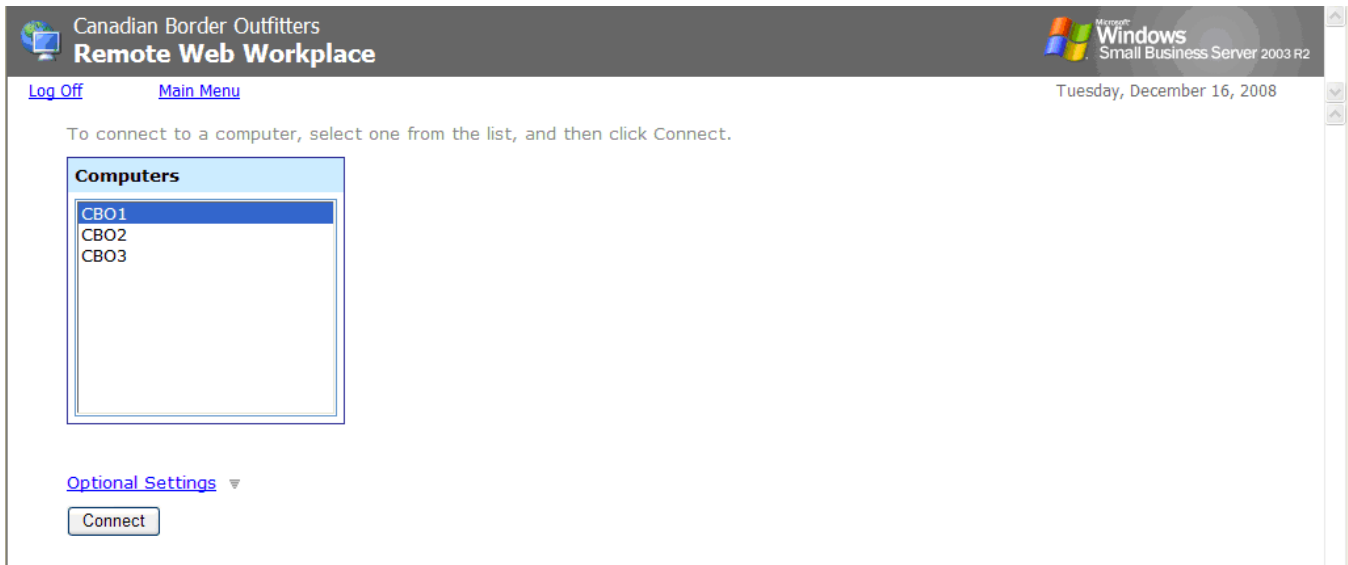
Click on the "Install ActiveX Control" option. The screen will clear and once again appear as follows:



Again, click "Connect to Client Desktops." The options on both sides of the screen will be removed, and after about 30 seconds, you get the following message:

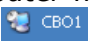


Click **Install**. The Remote Desktop ActiveX Control will now be installed. After the installation is complete, the following screen will appear:

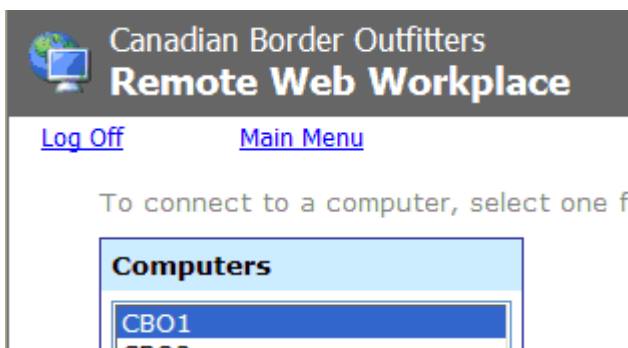


NOTE: This is the screen that will appear from now on when you click "Connect to Client Desktops."

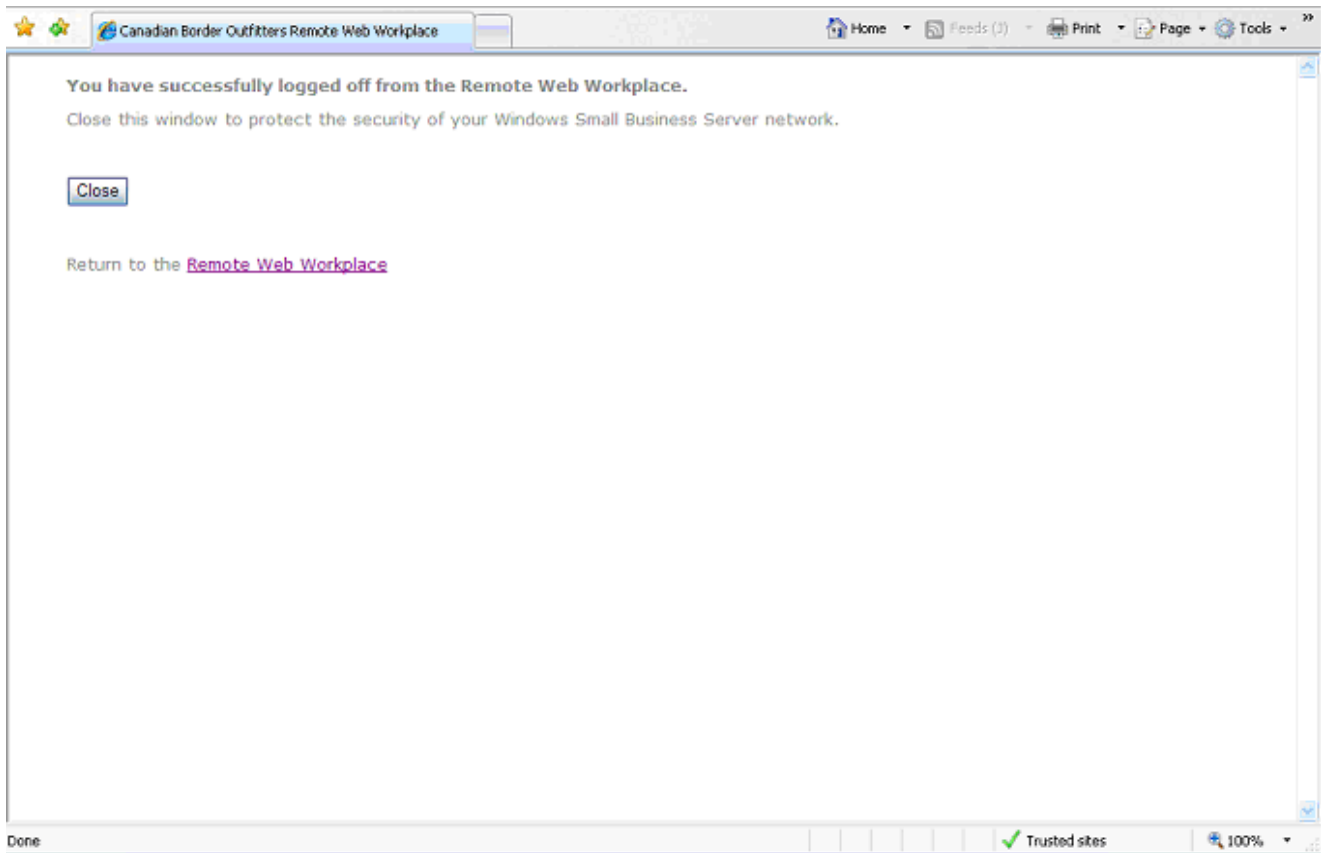
Now click on the computer you wish to connect to (by default this is CBO1, and is normally the computer you would log in to), then click **Connect**. After a few seconds your screen will fill with the remote computer's screen, and you'll be asked to enter the user name and password for the compute. By default, the user name will be the same user name that you entered when you logged into the Remote Web Workplace. Enter the password for the computer, then click **OK**.

You will now be logged into the computer and run it as though you were sitting at it. At the top of the screen you will see a small bar that www.canoetrip.info, and on the right-hand side of the bar you'll see the minimize (-) and maximize (+) buttons. Click the minimize button to see your local computer. when you minimize the remote computer window, you'll get an icon on the task bar with the name of the computer you are logged in to . Click on this icon to return to the remote computer.

When you are finished working with the computer, click **Start**, then click **Log Off** to log off the remote CBO computer. You'll be returned to the screen listing the Client computers you can connect to. Click the Log off link to exit the Remote Web Workplace.



The following screen will appear:



Make sure you click the **Close** button to exit the window.

Client Computers

CBO1

User name: xxxxxxxxx

Password: xxxxxxxxxxxxxxxxx

CBO2

User name: xxxxxxxxx

Password: xxxxxxxxxxxxxxxxx

CBO3

User name: xxxxxxxxx

Password: xxxxxxxxxxxxxxxxx